

### General information

Wall type : Cantilever wall

Concrete and steel class

Steam :C25/30-B500B

Footing :C25/30-B500B

### Design codes

Eurocode 0 EN1991-1-1, Basis of structural design

Eurocode 1 EN1991-1-1, Actions on structures

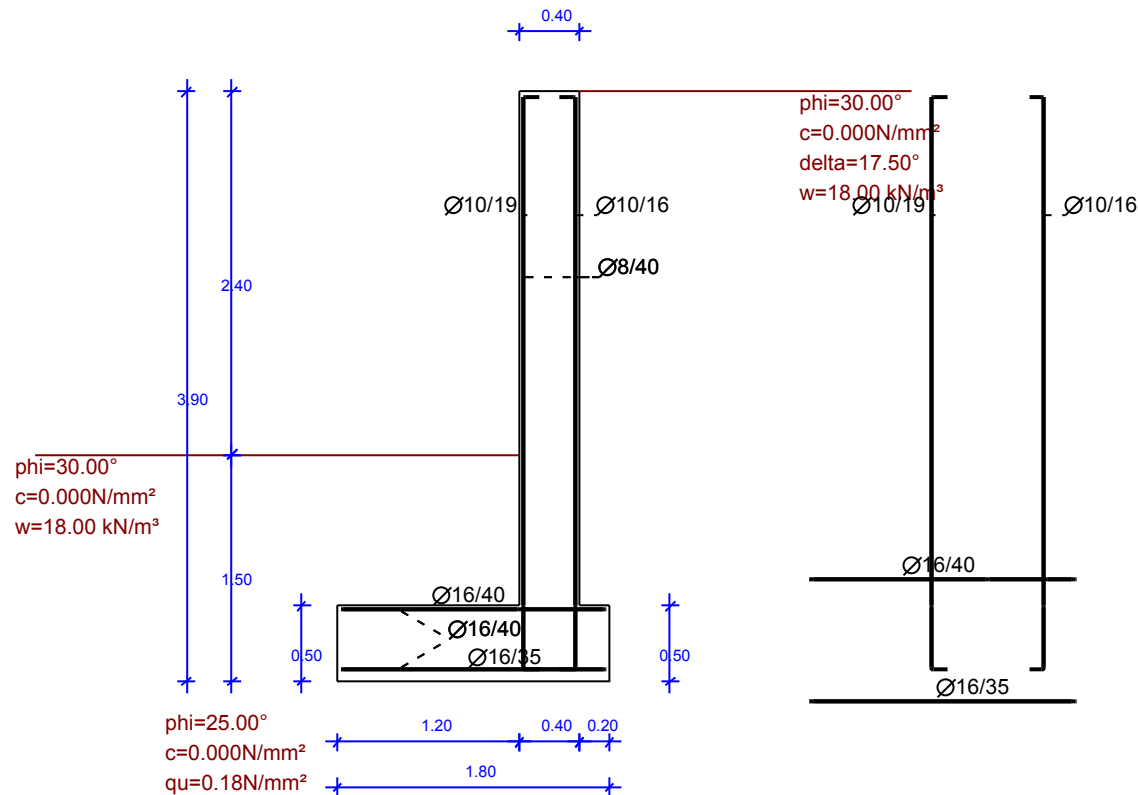
Eurocode 2 EN1992-1-1, Design of concrete structures

Eurocode 7 EN1997-1-1, Geotechnical design

Eurocode 8 EN1998-5, Earthquake design

### Loads

Horizontal: dead Hg=0.00kN, live Hq=0.00kN



#### Soil properties back-1

phi=30.00°  
c=0.000N/mm,  
delta=17.50°  
w=18.00 kN/mi

#### Soil properties front

phi=30.00°  
c=0.000N/mm,  
w=18.00 kN/mi

#### Foundation soil properties

phi=25.00°  
c=0.000N/mm,  
qu=0.18N/mm,

Concrete volume V= 22.60 [m³]

Reinforcement weight G=626.04 [kg]

### Reinforcing bar schedule

#		reinforcing bar [mm]	items	mm	g/m [kg/m]	length [m]	length [kg]
1	(W1)	100 — 3770 — 100	65	10	0.617	3.970	159.22
2	(W4)	100 — 3770 — 100	51	10	0.617	3.970	124.92
3	(W9)	10000	20	8	0.395	10.000	79.00
4	(W7)	1630	28	16	1.580	1.630	72.11
5	(W8)	1630	25	16	1.580	1.630	64.39
6	(W10)	10000	8	16	1.580	10.000	126.40
<b>Total weight [kg]</b>						<b>626.04</b>	

### Project: Example

ZID\_1 PR1

Scale : 1:50

Date: 13/07/2016

Designer:

Draw.No.:

Filename: nig be

Sign:

**G-PROFIL Krejci Kristian s.p.**

**BETONexpress**

www.runet-software.com