

General information

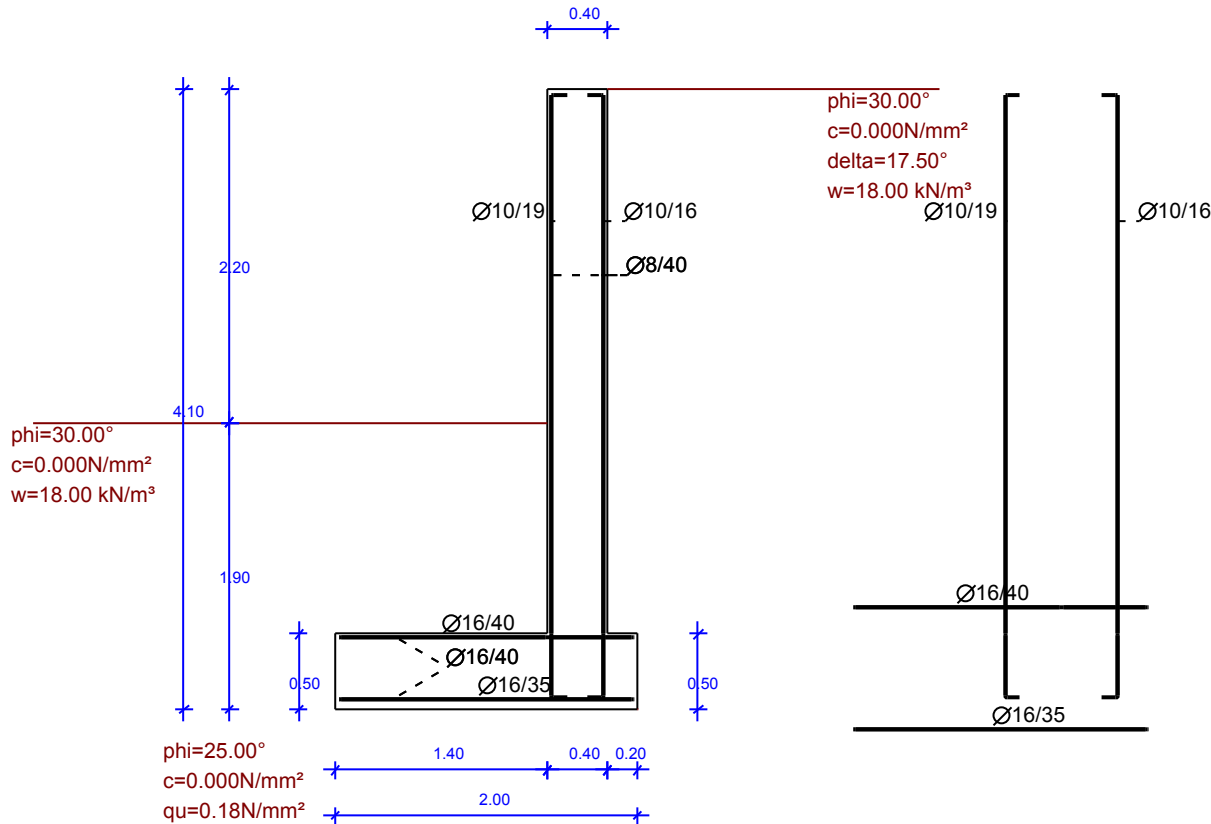
Wall type : Cantilever wall
 Concrete and steel class
 Steam :C25/30-B500B
 Footing :C25/30-B500B

Design codes

Eurocode 0 EN1991-1-1, Basis of structural design
 Eurocode 1 EN1991-1-1, Actions on structures
 Eurocode 2 EN1992-1-1, Design of concrete structures
 Eurocode 7 EN1997-1-1, Geotechnical design
 Eurocode 8 EN1998-5, Earthquake design

Loads

Horizontal: dead Hg=0.00kN, live Hq=0.00kN



Soil properties back-1

phi=30.00°
 c=0.000N/mm,
 delta=17.50°
 w=18.00 kN/mi

Soil properties front

phi=30.00°
 c=0.000N/mm,
 w=18.00 kN/mi

Foundation soil properties

phi=25.00°
 c=0.000N/mm,
 qu=0.18N/mm,

Concrete volume V= 14.64 [m]
 Reinforcement weight G=414.82 [kg]

Reinforcing bar schedule

#		reinforcing bar [mm]	items	mm	g/m [kg/m]	length [m]	length [kg]
1	W1	100 — 3970 — 100	39	10	0.617	4.170	100.34
2	W4	100 — 3970 — 100	31	10	0.617	4.170	79.76
3	W9	6000	20	8	0.395	6.000	47.40
4	W7	1830	17	16	1.580	1.830	49.15
5	W8	1830	15	16	1.580	1.830	43.37
6	W10	6000	10	16	1.580	6.000	94.80

Total weight [kg]

414.82

Project: Example

ZID_2 PR 1

Scale : 1:50

Date: 13/07/2016

Designer:

Draw.No.:

Filename: nig be

Sign:

G-PROFIL Krejci Kristian s.p.

BETONexpress

www.runet-software.com